

AEG Inland Empire Chapter Newsletter

of the Southern California Section

April 2014 Vol.10 No. 6

www.aegsc.org/chapters/inlandempire

April 2014 Meeting Announcement

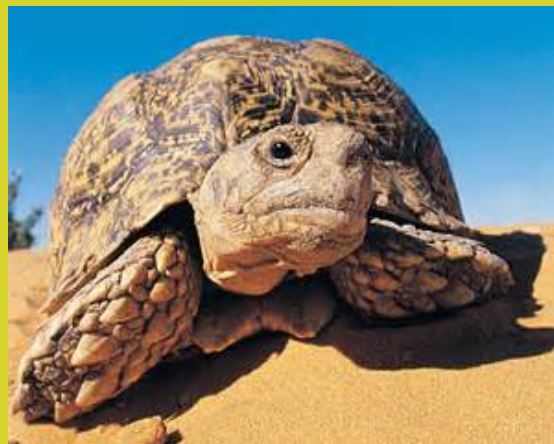
"Desert Tortoise Detection and Occurrence in the Morongo Basin"

Ed LaRue

Circle Mountain Biological Consultants, Inc



Don't be shy



COME SEE ME!!

Wednesday, April 16, 2014

5:00 – Social 6:00 – Dinner 6:45 - Program

Location _____.

Red Lobster in Riverside

(Meeting Cost \$30 with RSVP; \$35 without RSVP; Students \$15 with proof of student ID);

See meeting details on pages 3 - 7

RSVP to desmond.chung@geobrugg.com by **Monday April 14, 2014**

INSIDE

Pages:

2 Chair Message

3 - 4 Meeting Information

5+ Other Meetings & Announcements

Hello fellow AEG-IE members,

For all of you who missed our March meeting held at the Oak Mountain Winery in the Temecula Wine country, let me say that you not only missed an enlightening talk by our own Dr. Kerry Cato and Ron Skaggs of Condor Earth Technologies, but you also missed an opportunity to tour the wine tunnel currently under construction. The tour was led by Kerry and Don Magorian, the tunneling contractor, and demonstrated some of the constraints we all may face in doing the investigation for this type of project. Due to constraints on the locations accessible for the investigative borings, only two borings were advanced for this study and a friable sand bed that is now presenting difficulties to the tunnel progress was not encountered in the borings or the available surface exposures used to develop the tunneling parameters. These types of unexpected construction problems pose not only budgetary impacts on this type of project but also may result in difficulties meeting construction deadlines. The presentation pointed out that the contractor and the consultants need to keep frequent and open communication with the client so that they understand the impacts on their project. A very interesting talk, well received and very much enjoyed, perhaps by the availability of excellent wine produced on the site. The turnout for this meeting exceeded 40 persons and it was nice to see so many women as many of our members wives joined us for the festivities.

Now we are looking forward to our April meeting where our presenter will be Ed LaRue from Circle Mountain Biological Consultants, Inc. Ed will discuss the desert tortoise surveys his firm has conducted in the Morongo Basin. To all of you who have ever worked in the Southern California deserts, this talk will refresh your knowledge of the constraints that these endangered species pose to our projects in this area. For all those who have yet to plan work in the desert, this should provide you with some insight into what precautions you will need to take to protect any of these tortoises that may use your site and the habitat that they occupy. Details of the April meeting are contained elsewhere in this newsletter. See you there!

Best regards,
David Gaddie, Chair
AEG Inland Empire Chapter

We are growing and making the ground shake! So come join us, and see what's happening!

Note from the Editor

We had 39 attendees at the March meeting, and we are growing. Support the society so we can keep the interest in the industry with the next generation. Here are a few pictures from the last meeting.



Members, if you have any announcements, please email me the information by the 25th of the month. Otherwise the information will be put into the following month's newsletter. Thank you, and I look forward to seeing you at the next event.

Desmond Chung
AEG_IE Newsletter Editor

INTRODUCTION

Mr. Ed LaRue will review findings of 23 years of focused desert tortoise surveys from 1989 through 2013 in the Morongo Basin, inclusive of Yucca Valley and 29 Palms, in the south central Mojave, San Bernardino County, California.

SPEAKER BIOGRAPHY

Ed LaRue, Circle Mountain Biological Consultants

Ed worked as a U.S. Fish and Wildlife Service and U.S. Forest Service biologist from 1977 through 1986, including time at Patuxent Wildlife Research Center working with endangered birds from 1977 through 1983, and in Puerto Rico with the endangered Puerto Rican parrot from 1983 through 1986, receiving his Master's at Ohio State in 1987 in entomology.

Ed has worked with desert tortoises since 1989, serving as a board member with the Desert Tortoise Council from 1991 through 2004 and 2011 until present. In 1994, he produced the Tortoise Handling Guidelines, which served for 15 years, until 2009 when USFWS guidelines replaced them.

Between 1992 and 2005, he wrote four of the first ten Habitat Conservation Plans for the desert tortoise in California, resulting in 10a incidental take permits.

He and partner, Sharon Dougherty, started Circle Mountain Biological Consultants, Inc. in 1994, and have worked almost exclusively with desert tortoises and management plans since then.

Between 1998 and 2004, he worked for the BLM as one of two wildlife biologists on the West Mojave Plan.

Chapter Officers**Chair****David Gaddie**

Consulting Geologist

dcgaddie@yahoo.com**Vice Chair****Jeff Fitzsimmons**

John R. Byerly, Inc.

(909) 877-1324

geojeff08@att.net**Treasurer****Mark Doerschlag**

Peak Group

geofantasy@aol.com**Secretary****Shaun Wilkins**

Petra Geotechnical, Inc.

swilkins@petra-inc.com

(657) 269-4980

Past Chairs:

Douglas Johnston, 2013;

Debbie Kunath, 2012;

Frank Jordan, 2005, 2011;

Douglass Johnston, 2010;

Kerry Cato, 2009;

Mike Cook, 2008;

Rick Gundry, 2007;

Gary Wallace, 2006

Newsletter Editor**Desmond Chung**

Geobrudd North America, LLC

(990) 706-8964

desmond.chung@geobrudd.com

The AEG Inland Empire Chapter Newsletter is a monthly publication of the Inland Empire Chapter of the Southern California Section, Association of Environmental and Engineering Geologists. For more information visit the Chapter website:
<http://www.aegsc.org/chapters/inlandempire>

Submittals: Deadline, 25th of the month. Employment notices, job position announcements, and advertisements can be posted for a minimal fee. Newsletter circulation exceeds 300 people in greater inland areas of Southern California, and elsewhere.

E-Mail Address changes:

desmond.chung@geobrudd.com

AEG-IE April Meeting Details

Date & TimeWednesday, April 16, 2014.

Social hour 5:00 to 6:00,

Dinner 6:00 to 6:45

Announcements 6:45 to 7:00

Talk and Q&A 7:00 to 8:15

Location

Red Lobster

3700 Park Sierra

Riverside, CA 92505

Meal

Choice of:

- Shrimp Linguini Alfredo

- Tilapia with Roasted Vegetables

- Blue Cheese Sirloin

****Please let us know which meal you would like when you RSVP**.****Cost**

\$30 with RSVP

\$35 without RSVP

\$15 per student with proof of valid student ID

RSVPdesmond.chung@geobrudd.com**Deadline is Monday April 14, 2014.**

Individuals who RSVP but do not attend may be charged if the final attendance does not meet the restaurant guarantee.

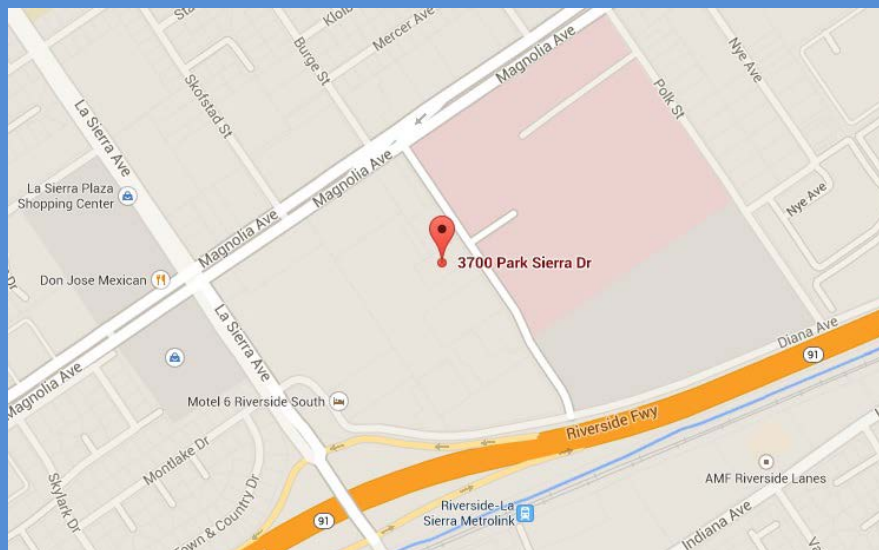
DIRECTIONS TO THE APRIL MEETING LOCATION

Directions: From CA-19 Heading East:

1. Exit Magnolia Avenue and merge onto it.
2. Turn Right onto Park Sierra Drive.
3. Destination will be on the Right (3700 Park Sierra Drive).

Directions: From CA-19 Heading West:

1. Exit La Sierra Avenue.
2. Turn Right onto La Sierra Avenue.
3. Turn Right at Magnolia Avenue.
4. Turn Right onto Park Sierra Drive.
5. Destination will be on the Right (3700 Park Sierra Drive).



OTHER MEETINGS

AEG-Southern California Section: April meeting TBD. For more information visit: <http://www.aegsc.org/>

AEG-Inland Empire Section: May 31, 2014 (Saturday). Topic: Short Course
Information to come. For more information visit: <http://www.aegsc.org/chapters/inlandempire/>

ASCE: (Orange County Branch). April meeting TBD.
For more info visit: <http://www.asceoc.org/index.php/events/events>.

ASCE: (San Bernardino-Riverside County Branch). April 7-11, 2014 (Monday-Friday).
Topic: **34th US Society on Dams Conference: Dams and Extreme Events – Reducing Risk of Aging Infrastructure under Extreme Loading Conditions.** Hosted: **In San Francisco.** For more info visit: <http://www.asce-sbriv.org/index.html>.

ASCE: (San Diego County Branch). April 22, 2014, Lunch Meeting Tuesday. **Poseiden Design-Build Desalination Pipeline Project.** Speaker: **TBD.** For more info visit: <http://www.asce-sd.org/>

Desert Symposium 2014: (Information/Call for Papers/Registration) April 18–21, 2014.
The 28th Annual Desert Symposium will be held at the Desert Studies Center, Zzyzx, CA. Theme: ***“Environmental Monitoring and Reconstruction: Linking Causes and Biological Consequences.”*** Field Trip: ***“Ice Age Hydrology: Not a Drop Left to Drink”***.
see attached registration form. Abstract and paper form information can be found at <http://biology.fullerton.edu/dsc/pdf/papersubmission.pdf>.

EERI: (San Diego). April meeting TBD. For more info, visit: <http://sandiego.eeri.org/>

GRA: April meeting TBD. For more info, visit www.grac.org/

IGS: April 9, 2014 (Wednesday). Topic: ***“Structure of the San Bernardino Basin Inferred from Seismic Surveys and Earthquake Relocations”***. Speaker: **Dr. Rufus Catchings, USGS in Menlo Park.** For more info visit: <http://www.inlandgeo.org/>

LA Basin: No meeting in April. Encourage people to attend the annual PSAAPG convention.
For more info visit: <http://www.labgs.org/>

SCGS: April 7, 2014 (Monday). Topic: ***“Quaternary Eolian Sedimentation on a Carbonate Island, San Salvador, Bahamas”*** Speaker: **Dr. Mario Caputo.** For more info visit: <http://www.scgs.org/>.

SME: April Meeting TBD. For more info visit: <http://www.smenet.org/SouthernCalifornia/>

SDAG: April 16, 2014 (Wednesday). Topic: ***“Student Scholarship Talks”*** Emcee: **Anne Sturz.**
For more info visit: <http://www.sandiegogeologists.org/index.html>

ANNOUNCEMENTS

2014 membership dues: If you have not renewed your AEG membership for 2014 please take a moment to do so. Membership can be renewed easily and securely at www.aegweb.org. We thank you if you have already renewed your membership for 2014.

California State University, Fullerton's Department of Geological Sciences and South Coast Geological Society has their **5th Annual Geology Research Day** on Friday, April 25th from 3-6pm. See attached flyer.

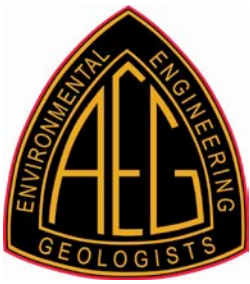
JOB ANNOUNCEMENTS

Job Announcement 1

CALTRANS Division of Engineering Services, Materials Engineering & Testing Services Geotechnical Services, is looking to fill an Engineering Geologist position. Salary is between \$4,608-\$8,675, and is located in the Eureka field office in Humboldt county. More information at http://jobs.spb.ca.gov/wvpos/moreinfo_s_pf.cfm?recno=544450. Position Number is 913-323-3756-204. Final filing date is April 4, 2014.

Job Announcement 2

CALTRANS State Water Resources Control Board is looking to fill an Engineering Geologist position. Salary is between \$4,608-\$8,675, and is located in the Oakland field office in Alameda County. More information at http://jobs.spb.ca.gov/wvpos/moreinfo_s_pf.cfm?recno=544949. Position Number is 880-120-3756-035. Final filing date is April 9, 2014.



AEG MEMBER BENEFITS

- You find value in our **conferences** - both [Annual Meetings and Specialty Conferences](#) - and in the **technical knowledge** and **continuing education** you [receive at these meetings](#).
- You appreciate **networking opportunities** in local settings, at [Section meetings](#), and at national conferences. With over **3,000 members**, AEG provides you with access to a wide network of Environmental and Engineering geology professionals.
- You love our **publications** - the [AEG NEWS, the Environmental & Engineering Geoscience Journal, and the AEG Insider](#) - with their relevant geoscience information, updates on AEG activities, and engaging scientific interest stories.

With benefits like these, of course you want to be part of AEG! And we encourage you to spread the word - talk to your co-workers, classmates, and friends about AEG and all it has to offer.

Remember:

- Student Membership is FREE
- Graduating students receive their first year of full membership for FREE as our Graduation Gift to you (Contact aeg@aegweb.org to receive your gift)

- New Membership is just \$95 (First Year of Membership only)

- If you have - thank you! Full members receive discounted registration for [Annual Meetings and Specialty Conferences](#)

If you have any questions regarding your membership status or would like to [Join or Renew today](#), please call AEG Headquarters at 303-757-2926 or email AEG@aegweb.org.

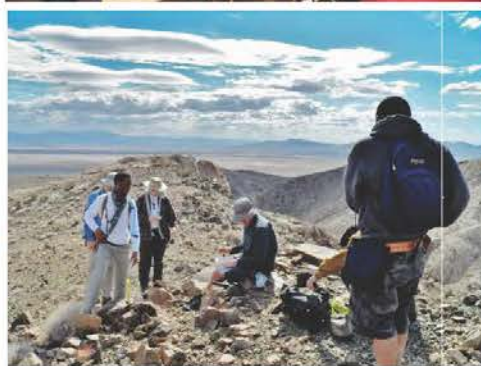
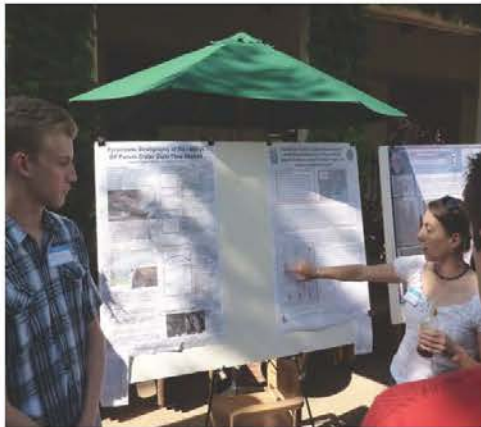


2014 Geology Research Day

Abstract Volume

Department of Geological Sciences
California State University,
Fullerton

Titan Student Union - Garden Café,
April 25, 2014



5th Annual

Geology Research Day

Sponsored by the CSUF Dept. of Geological Sciences
and South Coast Geological Society

Friday, April 25th from 3-6pm
CSUF Garden Café (TSU)



Abstract submission deadline...

TBA

Submission Categories:

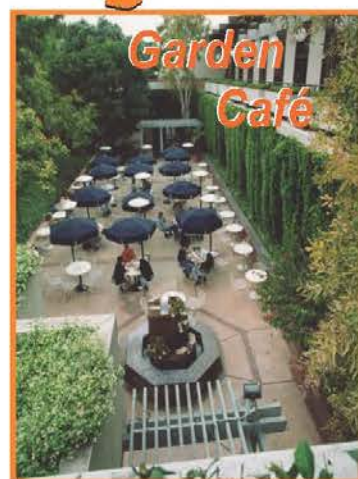
Undergraduate Proposal, Undergraduate Thesis,
Graduate Proposal, Graduate Thesis

Abstract

400 word abstract limit submitted wlaton@fullerton.edu

Poster

24" h x 36" v for proposal category, 48" h x 36" v for thesis category



Food, Drinks, Research,
Professional Contacts,
Prizes!!

Submission Instructions posted on
CSUF Geology webpage

Questions?
Email Rich Laton
wlaton@fullerton.edu